

The image is a composite of two interior photographs. The left side shows a staircase with grey carpeting and a dark wooden handrail, set against a white wall. The right side shows a room with light blue walls, a white fireplace mantel, and a grey carpet. The text '9 GOWER STREET' and 'WC1E 6HB' is overlaid in the center.

# 9 GOWER STREET

WC1E 6HB

2,419 SQ FT OFFICE TO LET



THE BEDFORD ESTATES



A BEAUTIFUL PERIOD GEORGIAN TERRACE  
BUILDING.

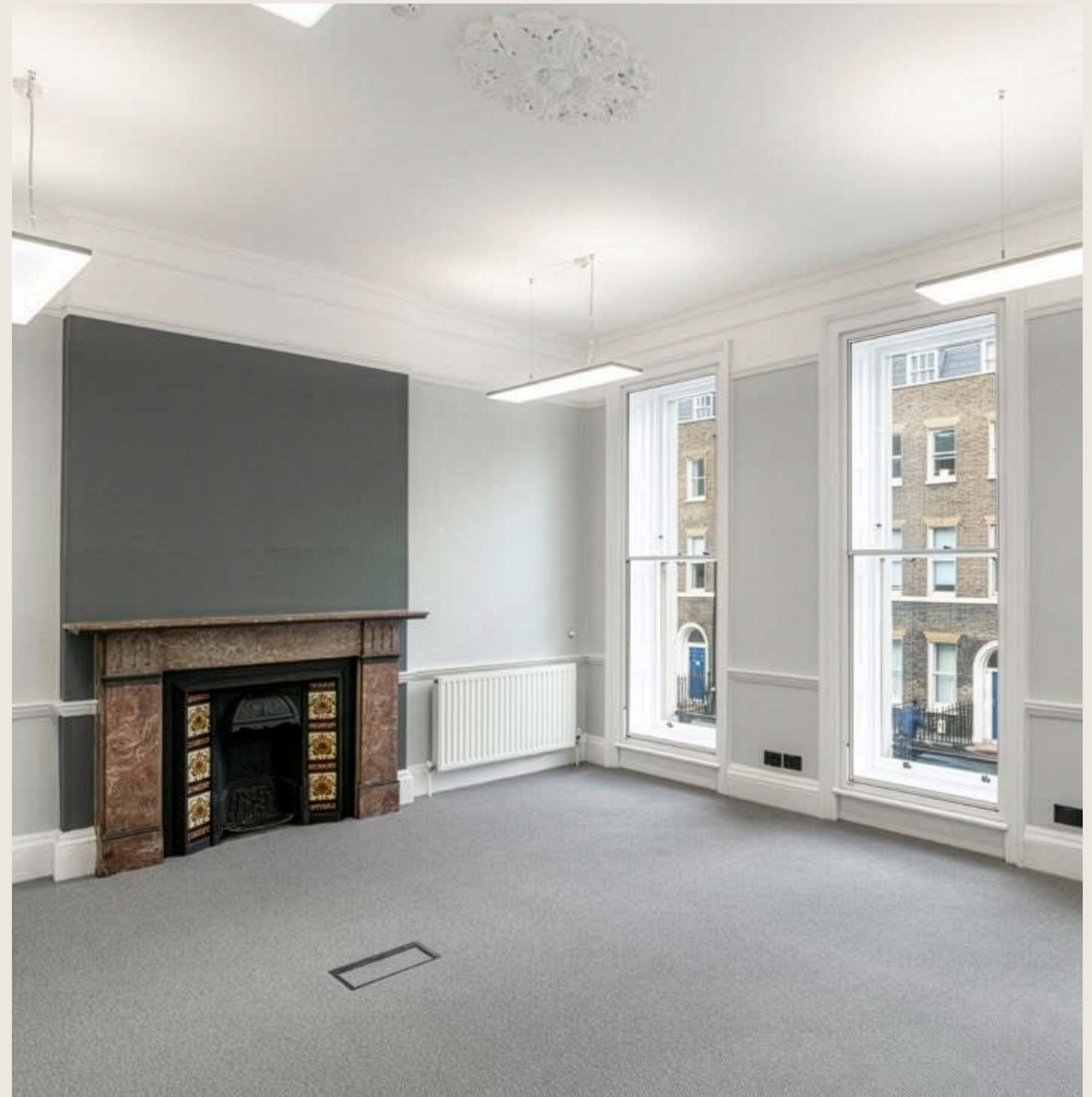
AVAILABLE FOLLOWING REFURBISHMENT  
TO A MODERN SPECIFICATION  
AND CONTEMPORARY AESTHETIC.

HIGHLIGHTS

REFURBISHED | UNIQUE PERIOD FEATURES  
SELF CONTAINED BUILDING | CONTEMPORARY AESTHETIC  
COMFORT COOLING | KITCHENETTE











BLOOMSBURY  
SITUATED IN THE HEART OF BLOOMSBURY,  
9 GOWER STREET ENJOYS A PRESTIGIOUS  
AND HISTORIC LOCATION JUST MOMENTS  
FROM THE BRITISH MUSEUM.

A BLEND OF HERITAGE CHARM AND  
MODERN CONVENIENCE, WITH EASY ACCESS  
TO HOLBORN AND TOTTENHAM COURT  
ROAD STATIONS.











THE NEIGHBOURS

- 1. Google
- 2. Apollo
- 3. Gardiner & Theobald
- 4. Skyscanner
- 5. Bloomsbury Publishing
- 6. Facebook
- 7. McKinsey
- 8. The British Museum
- 9. GSK
- 10. Mediacom

RETAIL

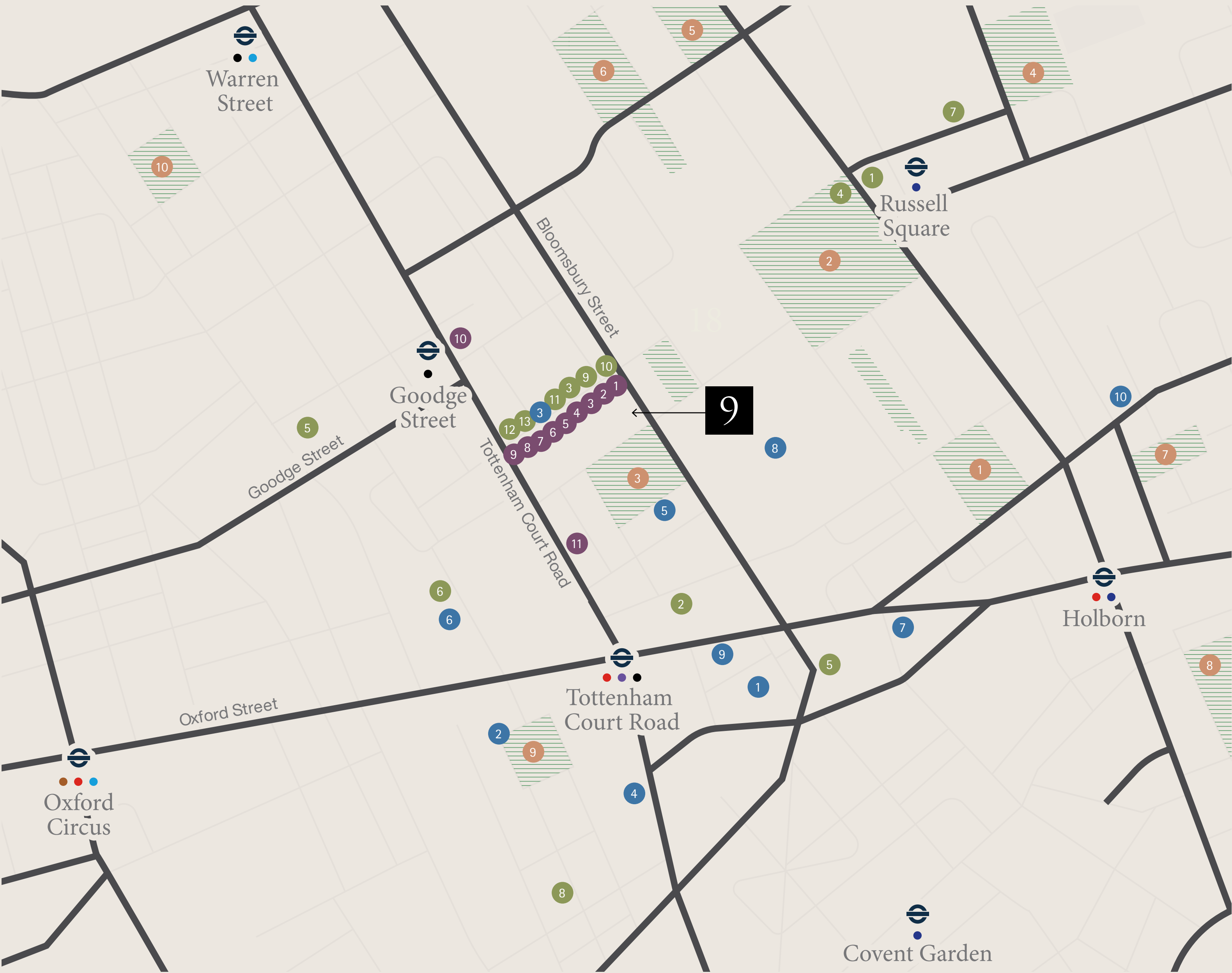
- 1. Orchidya
- 2. The Printing Centre
- 3. Decadence Salon
- 4. Cyclefit Store Street
- 5. Store Street Opticians
- 6. Iris Avenue
- 7. Treadwells Bookshop
- 8. Russell and Chapple
- 9. Store Street Framing
- 10. Heals
- 11. Warhammer

FOOD & DRINK

- 1. Fitz Bar
- 2. Dalloway Terrace
- 3. Store Street Espresso
- 4. Caffè Tropea
- 5. London Cocktail Club
- 6. Circolo Popolare
- 7. Riding House Bloomsbury
- 8. Ronnie Scott's
- 9. SKZO
- 10. Café Deco
- 11. Amelie's Wine House
- 12. The Life Goddess
- 13. Pentole e Padelle

GARDEN SQUARES

- 1. Bloomsbury Square Gardens
- 2. Russell Square Gardens
- 3. Bedford Square Gardens
- 4. Brunswick Square
- 5. Tavistock Square
- 6. Gordon Square
- 7. Red Lion Square
- 8. Lincoln's Inn Fields
- 9. Soho Square
- 10. Fitzroy Square





EXCEPTIONALLY CONNECTED

JUST MINUTES FROM MAJOR TRANSPORT  
HUBS: KING'S CROSS ST PANCRAS, EUSTON,  
AND RUSSELL SQUARE, THE AREA  
PROVIDES SEAMLESS ACCESS ACROSS  
LONDON, THE UK, AND BEYOND.



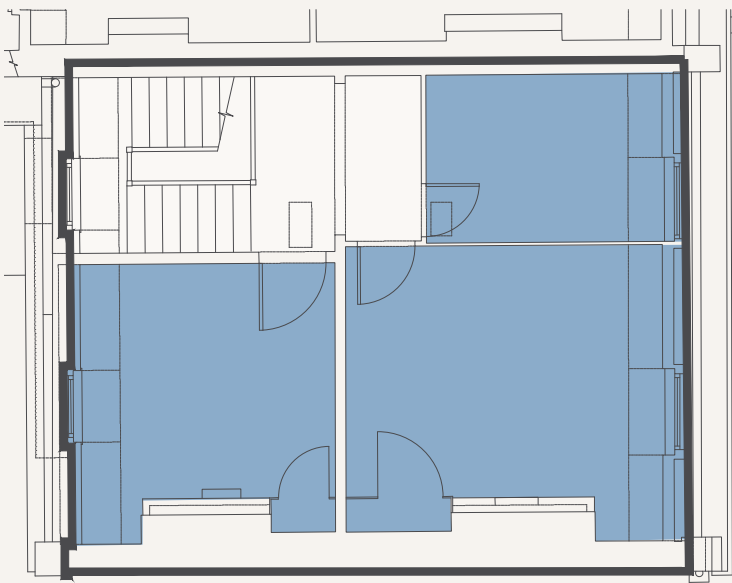


THE ACCOMMODATION COMPRISES  
THE FOLLOWING AREAS

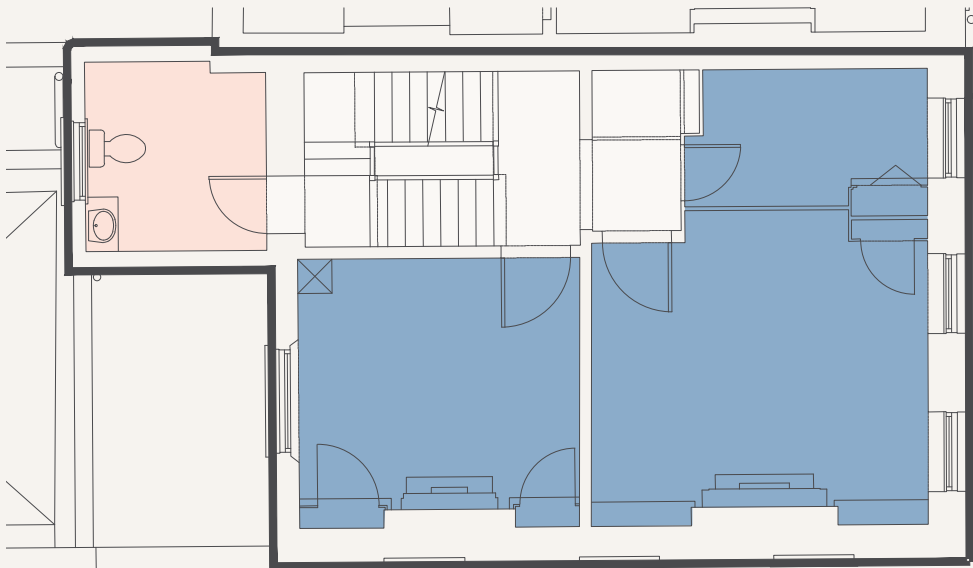
FLOOR	SQ FT	SQ M
THIRD	343	32
SECOND	391	36
FIRST	400	37
GROUND	677	63
LOWER GROUND	608	56
TOTAL	2,419	224



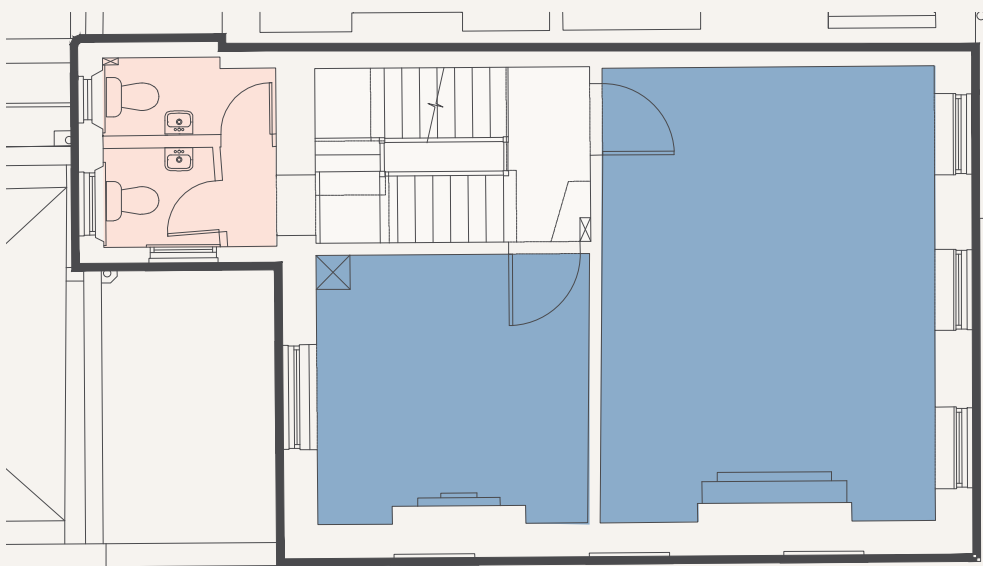
THIRD FLOOR  
343 SQ FT / 32 SQ M



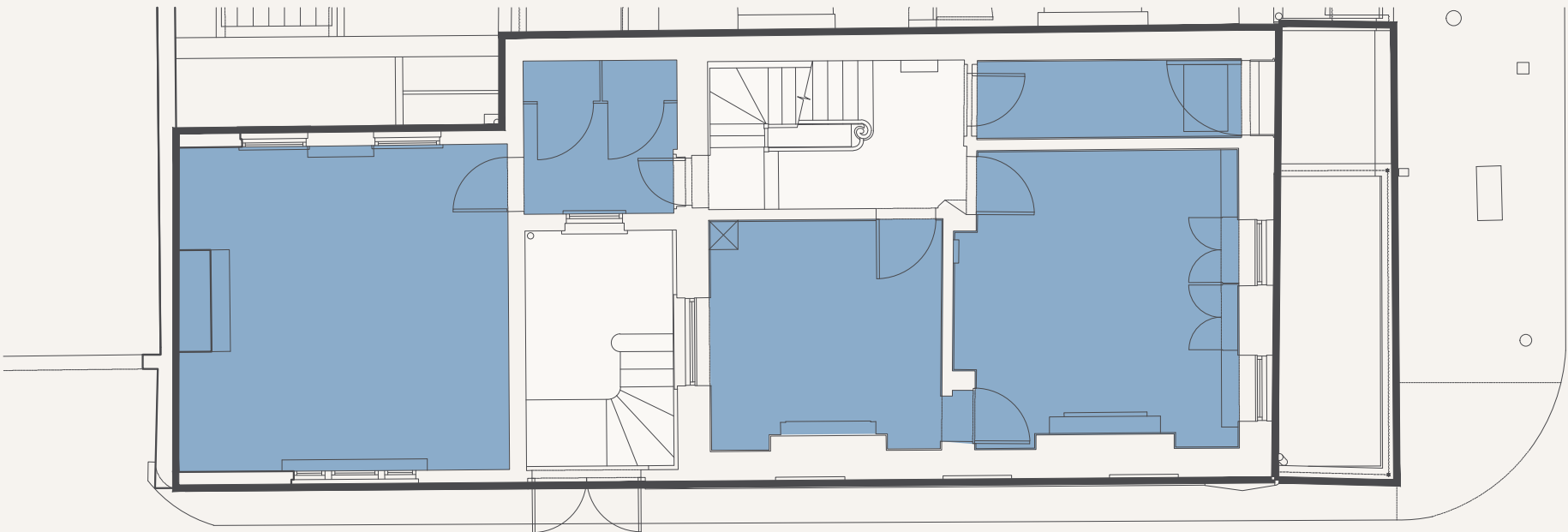
SECOND FLOOR  
391 SQ FT / 36 SQ M



FIRST FLOOR  
400 SQ FT / 37 SQ M



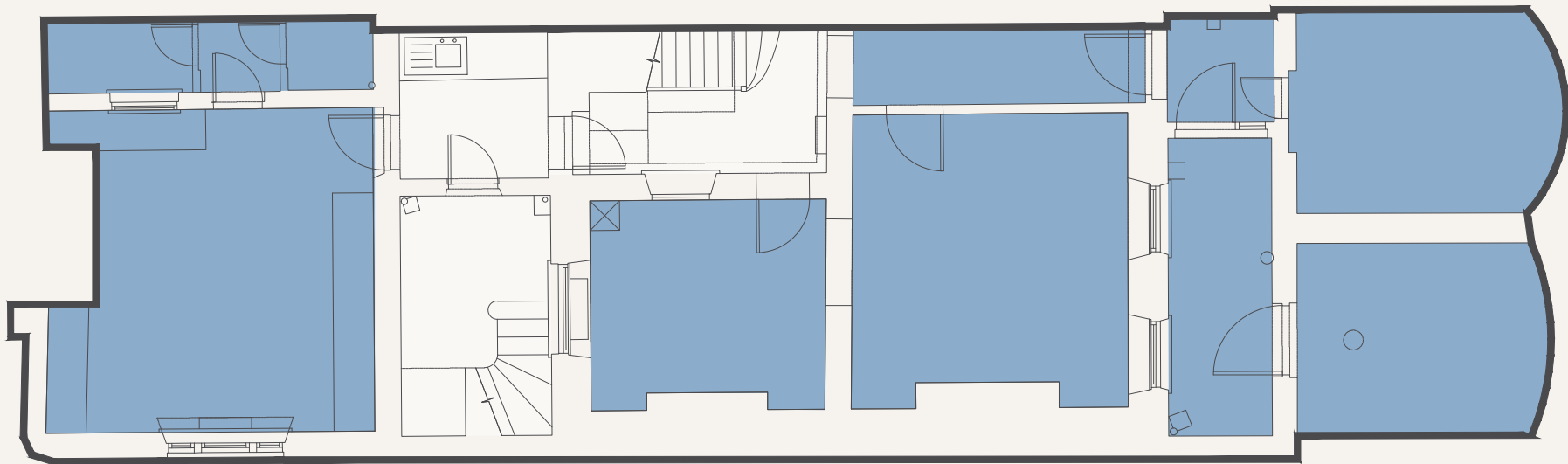
GROUND FLOOR  
677 SQ FT / 63 SQ M



GOWER STREET

GOWER MEWS

LOWER GROUND FLOOR  
608 SQ FT / 56 SQ M







EDWARD CHARLES  
& PARTNERS W 1  
CHARTERED SURVEYORS

JOSHUA MILLER  
JM@COMPTON.LONDON  
07917 725 365

SHAUN SIMONS  
SS@COMPTON.LONDON  
07788 423 131

JOSH PERLMUTTER  
JP@COMPTON.LONDON  
07814 699 096

IAN BRADSHAW  
IBRADSHAW@EDWARDCHARLES.CO.UK  
07468 525 486

AMY SKIDMORE  
ASKIDMORE@EDWARDCHARLES.CO.UK  
07734 924 146

OLLIE MITCHELL  
OMITCHELL@EDWARDCHARLES.CO.UK  
07769 310 206

Compton gives notice that these particulars are set out as a general outline only for the guidance of intending Purchasers or Lessees and do not constitute any part of an offer or contract. Details are given without any responsibility and any intending Purchasers, Lessees or Third Party should not rely on them as statements or representations of fact, but must satisfy themselves by inspection or otherwise as to the correctness of each of them. No person employed or engaged by Compton has any authority to make any representation or warranty whatsoever in relation to this property. Compton is the licensed trading name of Compton RE Disposals Limited. Company registered in England & Wales no. Registered office: 47 St John's Square, Clerkenwell, London, EC1V 4JJ Generated on 12/12/2025

