

Bloomsbury, WC1

Self-contained Georgian terraced building with a private  
rear outdoor courtyard 2,119 sq ft – Available now



– FIVE –

Gower Street



Located on Gower Street a short walk from Bedford Square and Tottenham Court Road station (Elizabeth Line), the building provides fully fitted and ready to work space with 5G to suit a diverse range of business users. Including meeting rooms, collaboration areas, a mixture of open plan workspace, breakout space and private offices.



Our sustainability responsibilities:



Carbon  
Reduction



Sustainable  
Refurbishments



Improved  
Air Quality







# Floorplans

The property has beautiful original period features and benefits of being fully self-contained. Arranged over five floors, with a high level internal specification as detailed below.


# Specification




Exquisite period features




Own front door




Fantastic natural levels of light




Private rear outdoor courtyard




Contemporary finishes




Cat 5e cabling




WCs



Shower facilities



Kitchen facilities



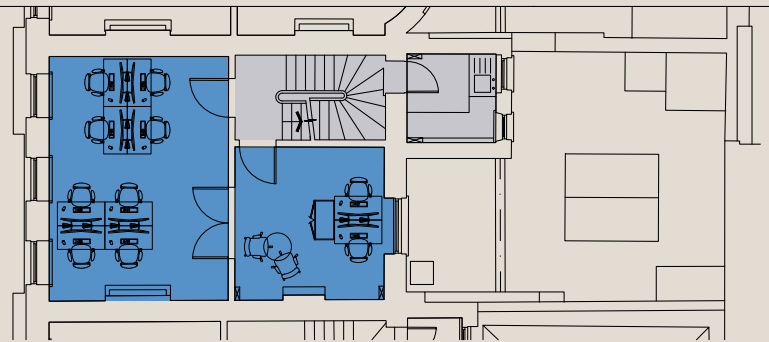
Fitted

# Schedule of Areas

Floor	Sq Ft
Third	406
Second	406
First	418
Ground	351
Basement	538
Total	2,119

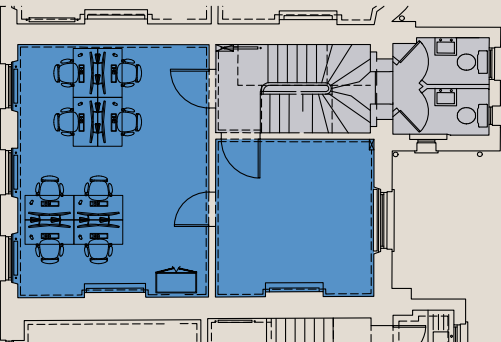
## First Floor

418 Sq Ft / 38.8 Sq M



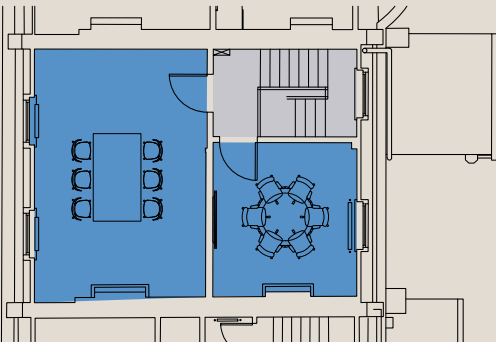
## Second Floor

406 Sq Ft / 37.7 Sq M



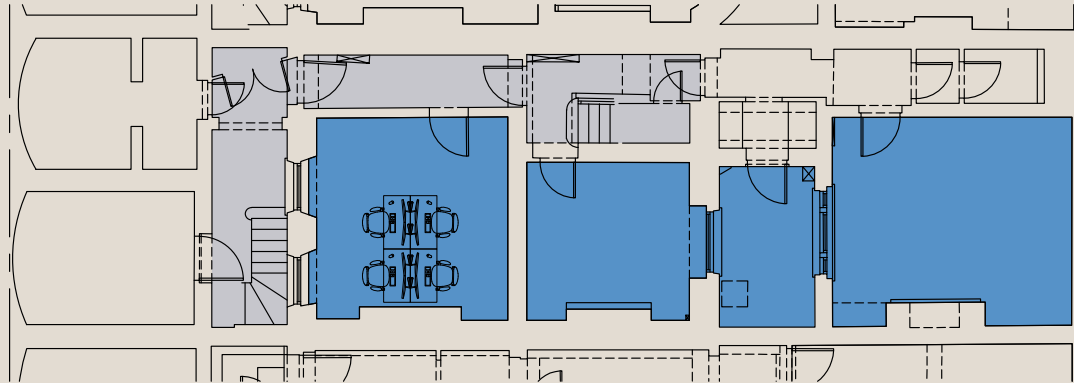
## Third Floor

406 Sq Ft / 37.7 Sq M



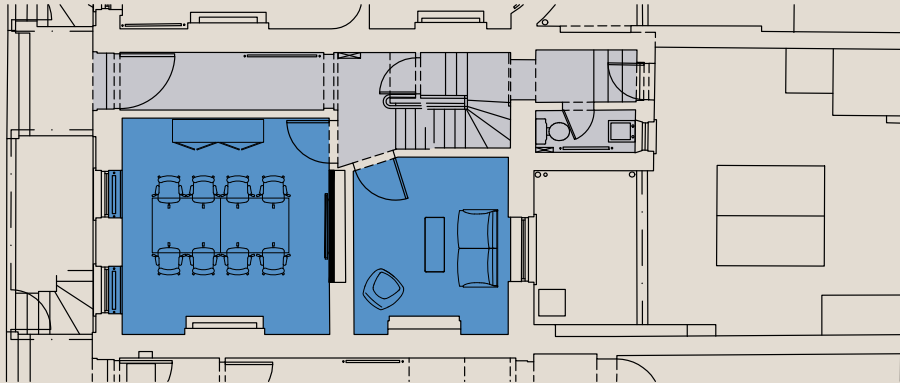
## Basement

538 Sq Ft / 49.9 Sq M



## Ground

351 Sq Ft / 32.6 Sq M



Office Core

Not to scale. Indicative Only.

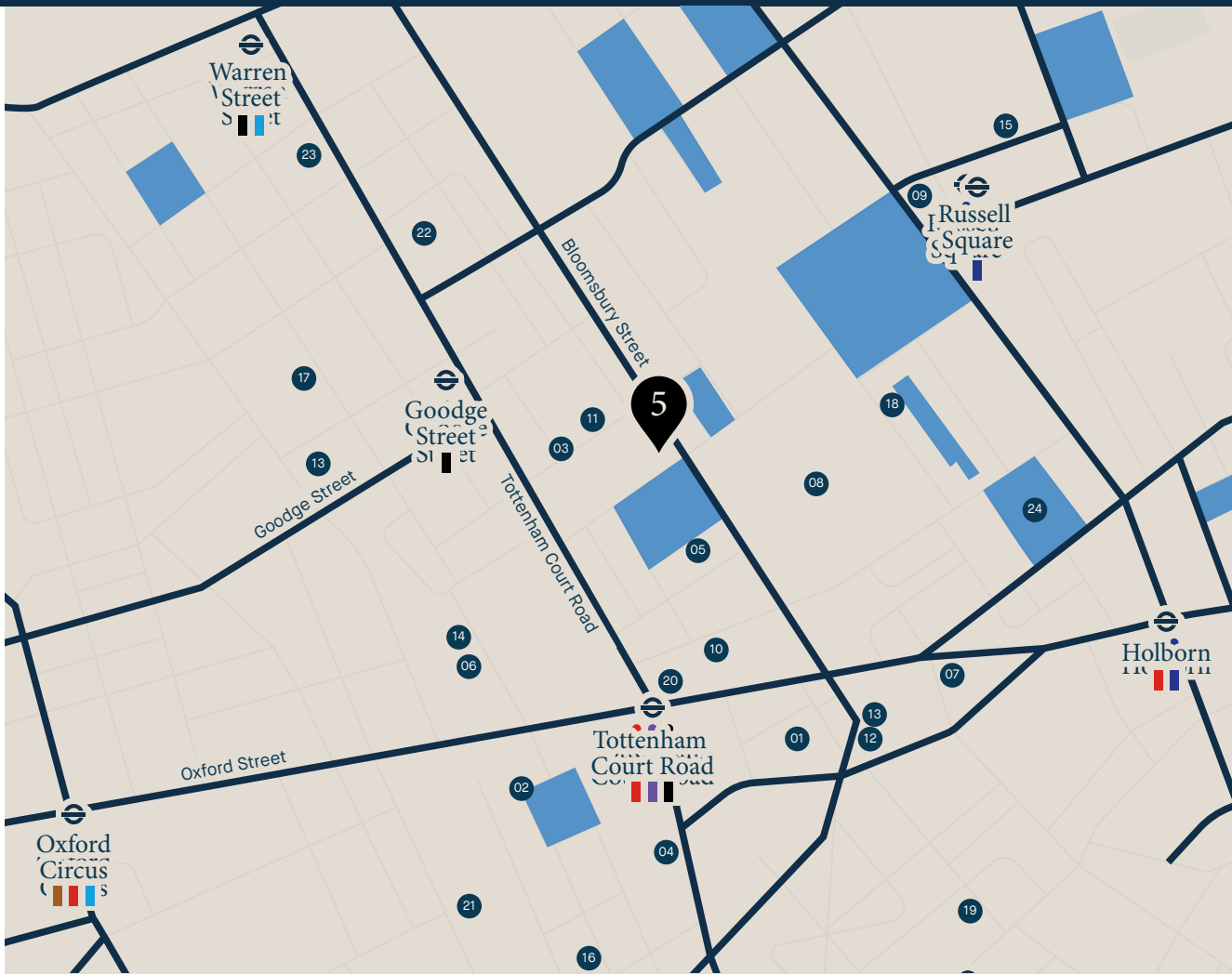




Gordon Square Gardens



Local bartender



# Bloomsbury

Store Street Espresso

5 Gower Street is situated in Bloomsbury, London's fashionable, cultural and intellectual heart and is surrounded by coffee shops, bars, restaurants and numerous retailers. The property is also a short walk from several main line stations, namely; Tottenham Court Road, Russell Square, Goodge Street and Holborn. The Elizabeth Line will revolutionise journey times travelling from East to West and within Central London through Tottenham Court Road.

Local food



## The Neighbours

01. Google
02. Apollo
03. Gardiner & Theobald
04. Skyscanner
05. Bloomsbury Publishing
06. Facebook
07. McKinsey
08. The British Museum

## Restaurants/Bars

09. The Fitz Bar
10. Dalloway Terrace
11. Store Street Espresso
12. Café Deco
13. London Cocktail Club
14. Circolo Popolare
15. Riding House Bloomsbury
16. Ronnie Scott's

## Wellness

17. Yoga Pilates London
18. Montague on the Gardens
19. Nuffield Health
20. Dominion Theatre
21. Fitness Lab
22. Fitness First
23. F45
24. Bloomsbury Square Garden

## Compton

EDWARD CHARLES  
& PARTNERS W1  
CHARTERED SURVEYORS

Shaun Simons  
+44 (0) 7788 423 131  
ss@compton.london

Ian Bradshaw  
+44 (0) 7468 525 486  
ibradshaw@edwardcharles.co.uk

Joshua Miller  
+44 (0)7917 725 365  
jm@compton.london

Molly Maguire  
+44 (0)7860 612 343  
mmaguire@edwardcharles.co.uk

Bedford Estates gives notice that these particulars are set out as a general outline only for the guidance of intending Purchasers or Lessees and do not constitute any part of an offer or contract. Details are given without any responsibility and any intending Purchasers, Lessees or Third Party should not rely on them as statements or representations of fact, but must satisfy themselves by inspection or otherwise as to the correctness of each of them. No person employed or engaged by Bedford Estates has any authority to make any representation or warranty whatsoever in relation to this property. March 2023.

Designed by Studio 185. studio185.london | 541