

THE BEDFORD ESTATES FILMING & VENUE HIRE

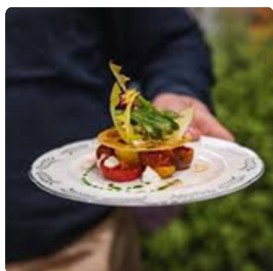
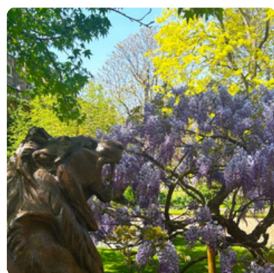
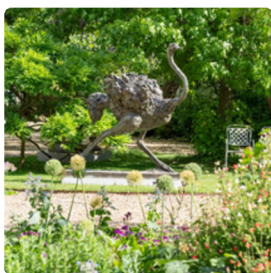
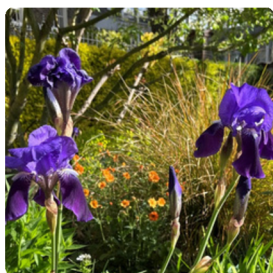




THE BEDFORD ESTATES

Take a stroll through Bloomsbury and you'll never be far from a glorious Georgian garden square. There are ten garden squares in all, each nestled among the elegant period properties that line our leafy streets. Some, like Russell Square, are open to the public, while others, such as Bedford Square Gardens and Montague Street Gardens, are private spaces.

The Bedford Estates are proud to be custodians of some of these historic green spaces. Our dedicated team of gardeners continue to cherish these havens of nature, conserving their heritage and ensuring they give pleasure to visitors throughout the year.



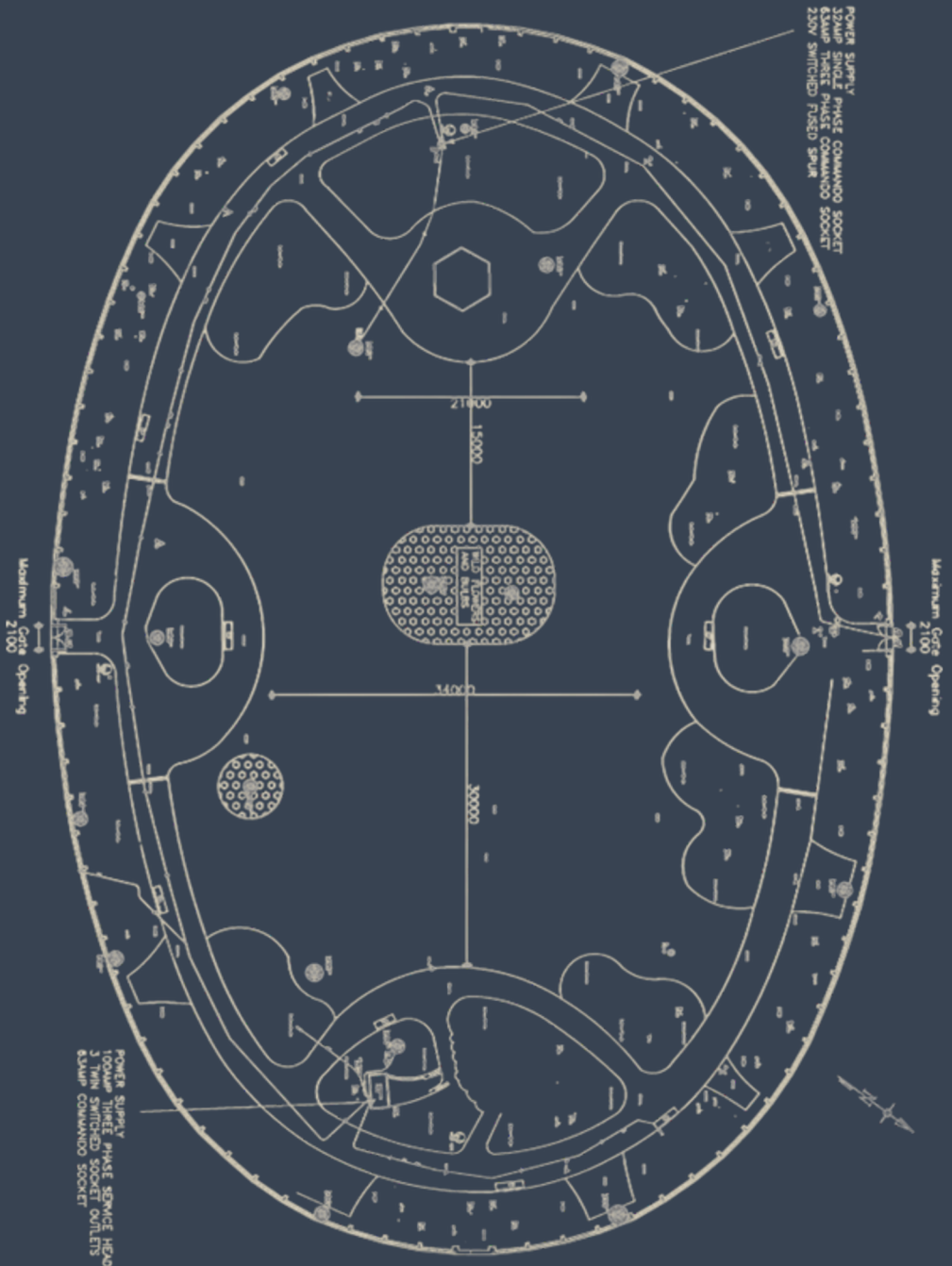
Bedford Square Gardens

- Our event season runs from June to September.
- The Estate offers exclusive use of the space, power and water only. Please note that there are no toilet facilities in the Gardens.
- Capacity – maximum 650 for standing Garden Party / Reception.
- No vehicles are allowed in the Garden unless with express permission. and no parking on the pedestrian areas outside Bedford Square Gardens is permitted.
- No dogs or other animals may be taken into the grounds loose or on a lead (except guide dogs).
- Exclusive use of the Garden may not extend beyond four days.
- Our event partner is Lettice Events.
- Curfew for all events is 10.30pm

Costs

- Daily Rate – High Season – £5,500 + VAT (Jun to Sept)
- Damage Deposit (refundable) – £5,000 + VAT
- Set-Up and Derig Rates charged at 50% of Day Rate

Bedford Square Gardens



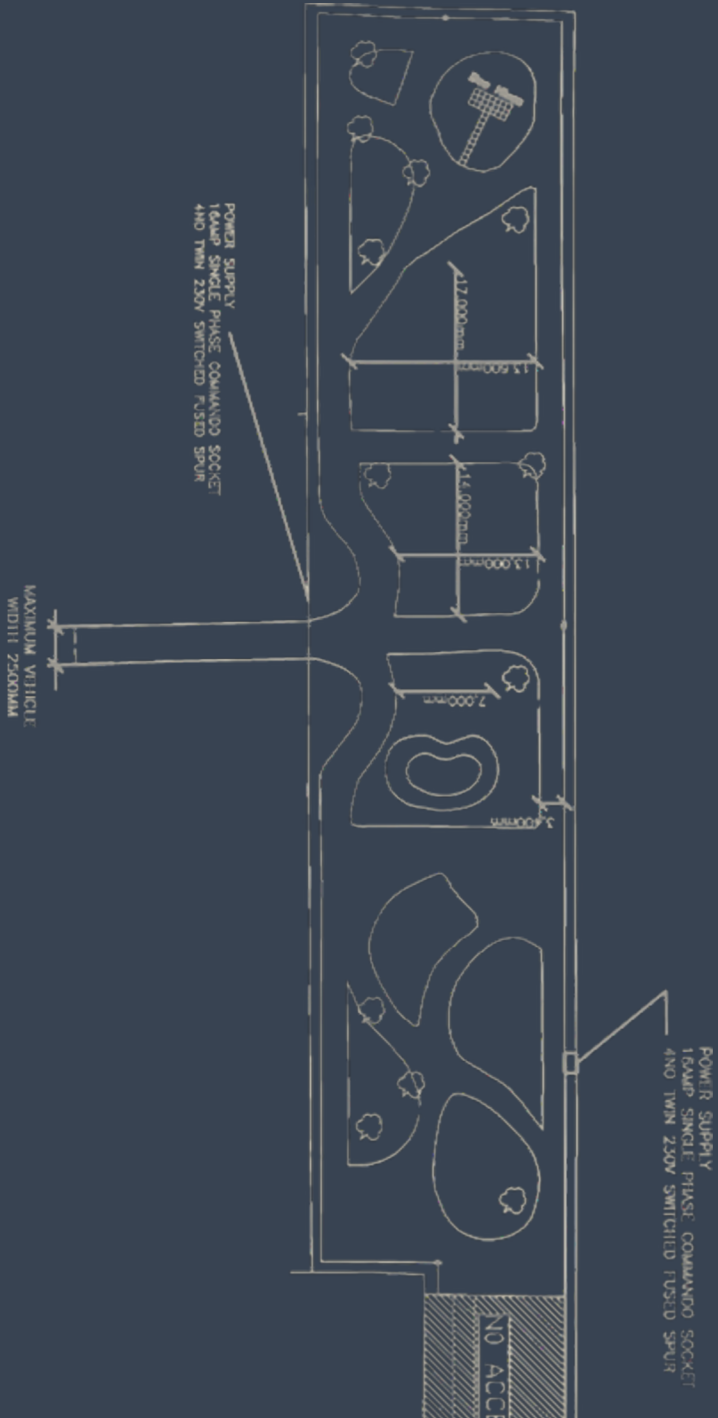
Montague Street Gardens

- Our event season runs from June to September.
- The Estate offers exclusive use of the space and power only. Please note that there are no toilet facilities in the Gardens.
- Capacity – maximum 400 for standing Garden Party / Reception.
- No dogs or other animals may be taken into the grounds loose or on a lead (except guide dogs).
- Our event partner is Lettice Events.
- No amplified sound or music is allowed within the Garden.
- Exclusive use of the Garden may not extend beyond three days.
- The curfew for all events is 10pm

Costs

- Daily Rate – High Season – £5,500 + VAT (Jun to Sept)
- Damage Deposit (refundable) – £5,000 + VAT
- Set-Up and Derig Rates charged at 50% of Day Rate

Montague Street Gardens



Marquee Hire / Capacity

We have our own 19m marquee available for hire at a rate of £750 + VAT per event.



Marquee capacity 120 seated.

Bedford Square Gardens capacity 600.

Montague Street Gardens capacity 350.

Event Space FAQs

What hire options do you offer?

We hire our spaces on a day-rate basis and operate on a dry-hire model.

What facilities are available?

- Bedford Square Gardens: Full power and non-potable water are available.
- Montague Street Gardens: Full power is available. Please note that amplified music and generators are not permitted in this space.

Do you work with preferred suppliers?

Yes — we partner with Lettice Events as our preferred supplier.

Do you offer commission?

We do not offer or accept commission.

How do I secure a date?

Dates are only confirmed once the hire agreement has been signed.

When do payments need to be made?

All costs and the deposit must be paid in full before the event takes place.

What paperwork do you require before the event?

All event plans, risk assessments, and insurance documentation must be submitted at least one week prior to your event.

What happens if something is damaged?

Any damage or deviation from the agreed plans may result in the loss of your deposit.



Lettice is the UK's leading sustainable catering company, blending elegant luxury with exquisite restaurant-standard food.

We specialise in bespoke private and corporate events, personally tailored to give both host and guests incredible, memorable experiences.

As pioneers in a new wave of conscious catering, everything we do follows 100% sustainable practices.

letticeevents.com

Steph Gale 020 7820 1161 events@letticeevents.com

Filming & Photoshoots

With its elegant listed buildings and pretty gardens, Bloomsbury is wonderfully photogenic. Surrounded by Georgian houses, Bedford Square Gardens and Montague Street Gardens have been used as a location for fashion shoots, TV programmes and feature films.

We grant permission to film here subject to certain conditions and consider each request on an individual basis.

Location fees vary depending on the size of the crew, the length of time on site and how much support you require.

Contact Emma Brophy on +44(0) 20 7636 2885 or email Emma.Brophy@bedfordstates.com